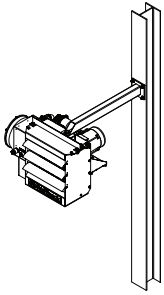


BMK

Basic Mounting Kit (BMK)*

The BMK is suitable for applications where the support arm can be bolted or welded directly to structural steel or concrete.

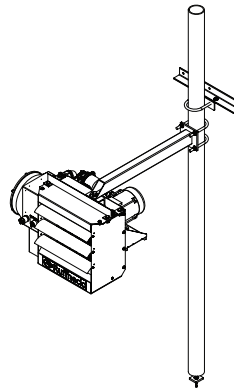


Model	Approximate Shipping Weight	
	Lbs.	kg
FX4/FX5 (12" fan)	16.5	7
FX4/FX5 (16" fan)	18.2	8
FX4/FX5 (20" fan)	19.3	9
HP / FR 12 / 16	16.5	7
HP / FR 20 / 24	18.2	8
AH-12A	16.5	7
AH-16A	18.2	8
AH-20A	19.3	9
AH-24A	20.3	9

PMK

Pipe Mounting Kit (PMK)*

Particularly useful in buildings with insufficient structural strength to use other types of mounts. Requires 3" pipe (3½" O.D.) (not supplied).

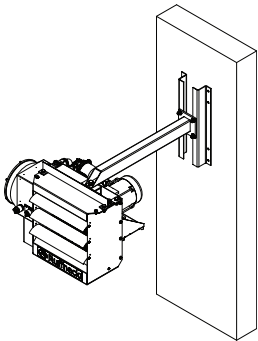


Model	Approximate Shipping Weight	
	Lbs.	kg
FX4/FX5 (12" fan)	23.7	11
FX4/FX5 (16" fan)	25.4	12
FX4/FX5 (20" fan)	26.5	12
HP / FR 12 / 16	23.7	11
HP / FR 20 / 24	25.4	12
AH-12A	23.7	11
AH-16A	25.4	12
AH-20A	26.5	12
AH-24A	27.5	12

WMK

Wall Mounting Kit (WMK)*

Ideal for use in buildings that have substantial walls. The Z sections provide additional support where necessary.

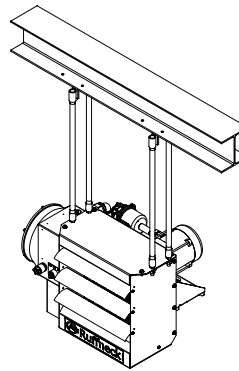


Model	Approximate Shipping Weight	
	Lbs.	kg
FX4/FX5 (12" fan)	24.3	11
FX4/FX5 (16" fan)	25.4	12
FX4/FX5 (20" fan)	26.5	12
HP / FR 12 / 16	24.3	11
HP / FR 20 / 24	25.4	12
AH-12A	24.3	11
AH-16A	25.4	12
AH-20A	26.5	12
AH-24A	27.5	12

HMK

Hanging Mounting Kit (HMK)

Simple and economical if an adequate overhead structure exists. Requires ½" pipe, cut and threaded (not supplied).

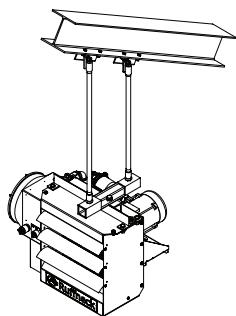


Model	Approximate Shipping Weight	
	Lbs.	kg
All FX4/FX5	4.5	2
All HP / FR	4.5	2
All AH	4.5	2

SHMK

Swivel Hanging Mounting Kit (SHMK)*

Swivels 360°. Requires ½" pipe, cut and threaded (not supplied).

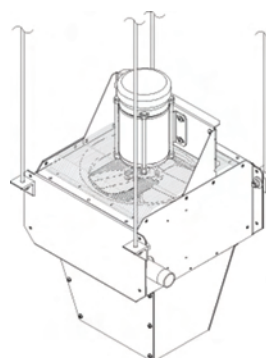


Model	Approximate Shipping Weight	
	Lbs.	kg
FX4/FX5 (12" fan)	18.2	8
FX4/FX5 (16" fan)	19.4	9
FX4/FX5 (20" fan)	20.4	9
HP / FR 12 / 16	18.3	8
HP / FR 20 / 24	20.1	9
AH-12A	18.2	8
AH-16A	19.4	9
AH-20A	20.4	9
AH-24A	21.4	10

VHMK

Vertical Hanging Mounting Kit (VHMK)

Simple and economical when mounting to an appropriate overhead structure. (Requires 3/8" THD Rod)



Model	Approximate Shipping Weight	
	Lbs.	kg
All AV	4.5	2

NOTE: Mounting kits are made of steel with wet applied enamel paint. If the heater is installed on a structure that is to be transported, provide additional support for the heater during transit. The suspended weight should not exceed 300 lbs. (136 kg).

How To Order: When ordering mounting kits, specify the type of kit required and the basic model of the heater to be mounted.

* Not suitable for models – HP 30, FR 30, HP 36, FR 36, or Tandem AH Series (24B fan configuration).